



MASTER LEDtube EM/ Mains T8

MAS LEDtube 1200mm UO 15.5W 830 T8

The Philips MASTER LEDtube integrates a LED light source into a traditional fluorescent form factor. Its unique design creates a perfectly uniform visual appearance which cannot be distinguished from traditional fluorescent. For those that are looking for value for money within limited budget and re-lamping efforts for better light effect and lifetime.

Product data

General Information	
Cap-Base	G13 [Medium Bi-Pin Fluorescent]
Nominal Lifetime (Nom)	60000 h
Switching Cycle	200000X
B50L70	60000 h

Light Technical	
Color Code	830 [CCT of 3000K]
Beam Angle (Nom)	160 °
Luminous Flux (Nom)	2300 lm
Luminous Flux (Rated) (Nom)	2300 lm
Rated Beam Angle	160 °
Correlated Color Temperature (Nom)	3000 K
Color Consistency	<6
Color Rendering Index (Nom)	83
LLMF At End Of Nominal Lifetime (Nom)	70 %

Operating and Electrical	
Input Frequency	50 to 60 Hz
Power (Rated) (Nom)	15.5 W

Lamp Current (Max)	73 mA
Lamp Current (Min)	67 mA
Starting Time (Nom)	0.5 s
Warm Up Time to 60% Light (Nom)	0.5 s
Power Factor (Nom)	0.9
Voltage (Nom)	220-240 V

Temperature	
T-Ambient (Max)	45 °C
T-Ambient (Min)	-20 °C
T-Storage (Max)	65 °C
T-Storage (Min)	-40 °C
T-Case Maximum (Nom)	55 °C

Controls and Dimming	
Dimmable	No

Mechanical and Housing	
Product Length	1200 mm

MASTER LEDtube EM/Mains T8

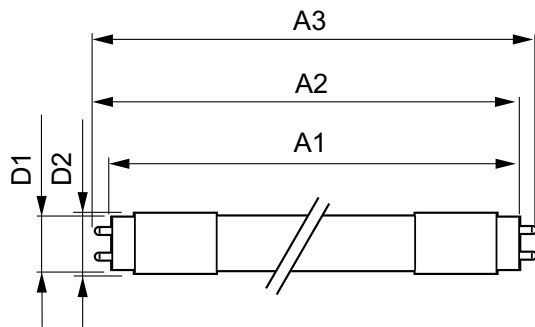
Approval and Application	
Energy Efficiency Label (EEL)	A++
Energy Saving Product	Yes
Approval Marks	RoHS compliance TUV CE marking KEMA Keur certificate
Energy Consumption kWh/1000 h	16 kWh
Product Data	
Full product code	871869964721600

Order product name	MAS LEDtube 1200mm UO 15.5W 830 T8
EAN/UPC - Product	8718699647216
Order code	929002020502
Numerator - Quantity Per Pack	1
Numerator - Packs per outer box	10
Material Nr. (12NC)	929002020502
Net Weight (Piece)	0.251 kg

Warnings and Safety

- NOTES: The overall energy efficiency and light distribution of any installation that uses these lamps are determined by the design of the installation.

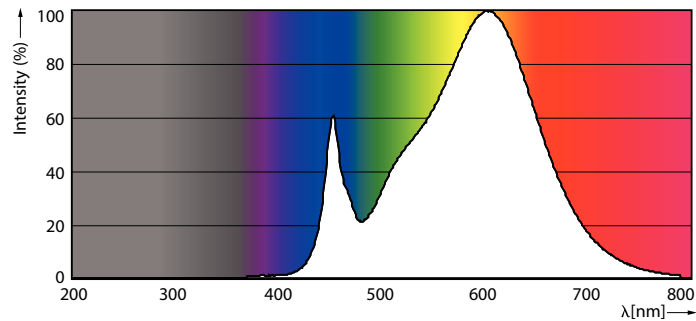
Dimensional drawing



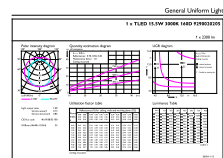
TLED 4ft 220-240V15.5-36W 2300lm3000KG13

Product	D1	D2	A1	A2	A3
MAS LEDtube 1200mm UO 15.5W 830 T8	25.8 mm	28 mm	1198.2 mm	1205.3 mm	1212.4 mm

Photometric data



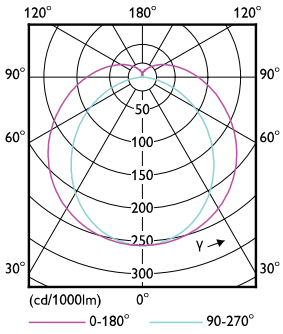
TLED_4ft_220-240V15.5-36W_2300lm_3000K_G13



TLED_4ft_220-240V15.5-36W_2300lm_3000K_G13

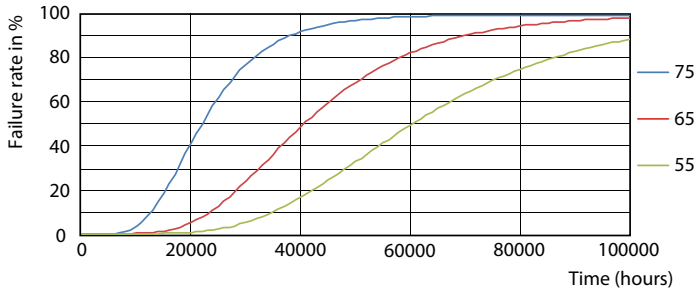
MASTER LEDtube EM/Mains T8

Photometric data

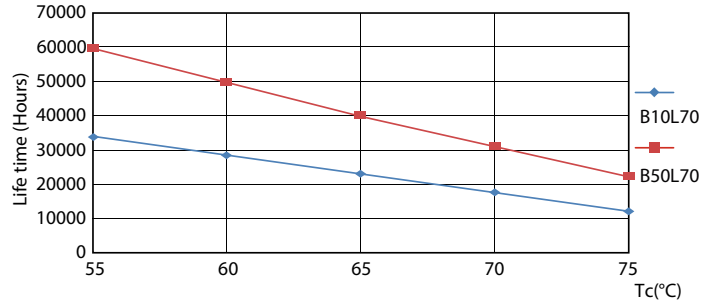


TLED_4ft_220-240V15.5-36W_G13-LDD

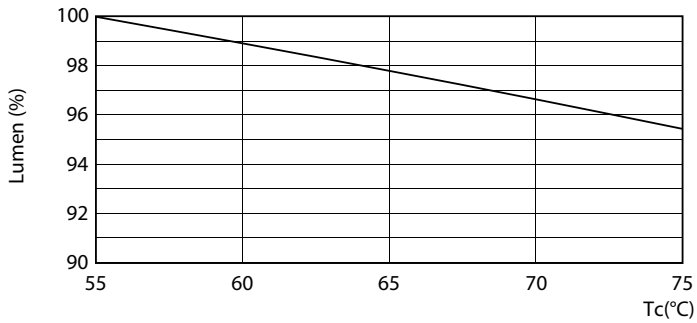
Lifetime



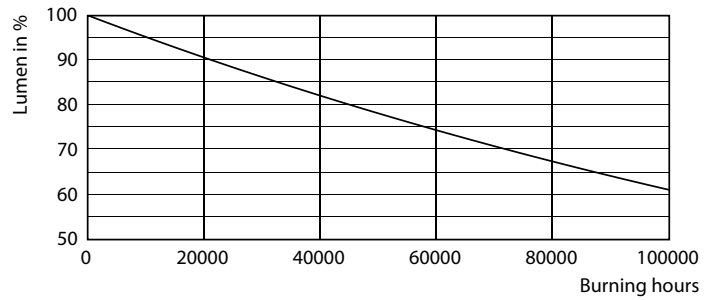
TLED_220-240V_G13-FailureRate



TLED_220-240V_G13-LifetimeVsTc



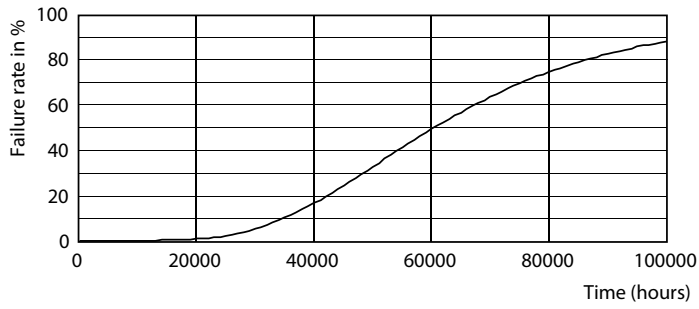
TLED_220-240V_G13-LumenVsTc



TLED_220-240V_G13

MASTER LEDtube EM/Mains T8

Lifetime



TLED_220-240V_G13





MASTER LEDtube EM/ Mains T8

MAS LEDtube 1200mm UO 15.5W 840 T8

The Philips MASTER LEDtube integrates a LED light source into a traditional fluorescent form factor. Its unique design creates a perfectly uniform visual appearance which cannot be distinguished from traditional fluorescent. For those that are looking for value for money within limited budget and re-lamping efforts for better light effect and lifetime.

Product data

General Information	
Cap-Base	G13 [Medium Bi-Pin Fluorescent]
Nominal Lifetime (Nom)	60000 h
Switching Cycle	200000X
B50L70	60000 h

Light Technical	
Color Code	840 [CCT of 4000K]
Beam Angle (Nom)	160 °
Luminous Flux (Nom)	2500 lm
Luminous Flux (Rated) (Nom)	2500 lm
Rated Beam Angle	160 °
Correlated Color Temperature (Nom)	4000 K
Color Consistency	<6
Color Rendering Index (Nom)	83
LLMF At End Of Nominal Lifetime (Nom)	70 %

Operating and Electrical	
Input Frequency	50 to 60 Hz
Power (Rated) (Nom)	15.5 W

Lamp Current (Max)	73 mA
Lamp Current (Min)	67 mA
Starting Time (Nom)	0.5 s
Warm Up Time to 60% Light (Nom)	0.5 s
Power Factor (Nom)	0.9
Voltage (Nom)	220-240 V

Temperature	
T-Ambient (Max)	45 °C
T-Ambient (Min)	-20 °C
T-Storage (Max)	65 °C
T-Storage (Min)	-40 °C
T-Case Maximum (Nom)	55 °C

Controls and Dimming	
Dimmable	No

Mechanical and Housing	
Product Length	1200 mm

MASTER LEDtube EM/Mains T8

Approval and Application

Energy Efficiency Label (EEL)	A++
Energy Saving Product	Yes
Approval Marks	RoHS compliance TUV CE marking KEMA Keur certificate
Energy Consumption kWh/1000 h	16 kWh

Product Data

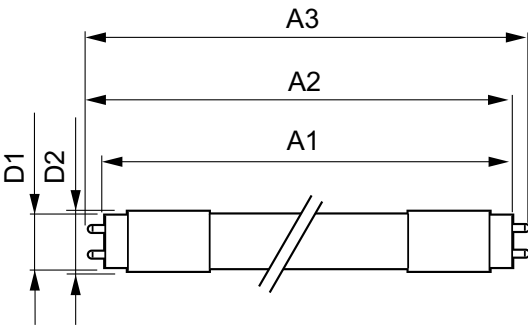
Full product code	871869964723000
-------------------	-----------------

Order product name	MAS LEDtube 1200mm UO 15.5W 840 T8
EAN/UPC - Product	8718699647230
Order code	929002020602
Numerator - Quantity Per Pack	1
Numerator - Packs per outer box	10
Material Nr. (12NC)	929002020602
Net Weight (Piece)	0.251 kg

Warnings and Safety

- NOTES: The overall energy efficiency and light distribution of any installation that uses these lamps are determined by the design of the installation.

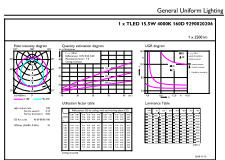
Dimensional drawing



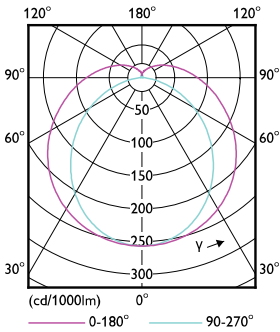
TLED 4ft 220-240V15.5-36W 2500lm4000KG13

Product	D1	D2	A1	A2	A3
MAS LEDtube 1200mm UO 15.5W 840 T8	25.8 mm	28 mm	1198.2 mm	1205.3 mm	1212.4 mm

Photometric data



OSRAM Components Ltd. Philips Lighting B.V. Page 11

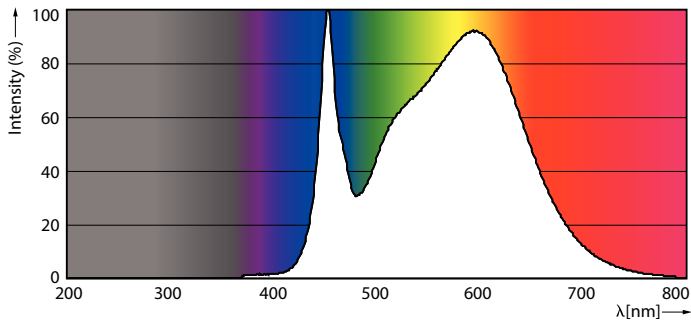


TLED_4ft_220-240V15.5-36W_G13-LDD

TLED_4ft_220-240V15.5-36W_2500lm_4000K_G13

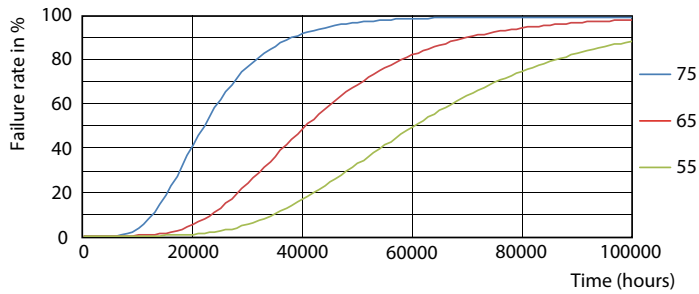
MASTER LEDtube EM/Mains T8

Photometric data

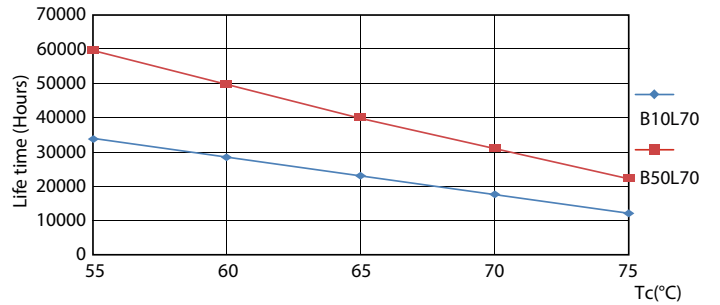


TLED_4ft_220-240V15.5-36W_2500lm_4000K_G13

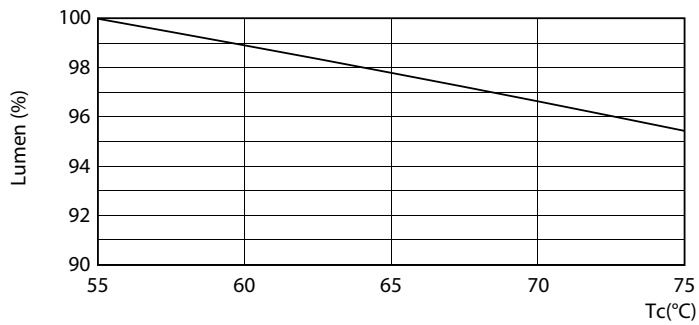
Lifetime



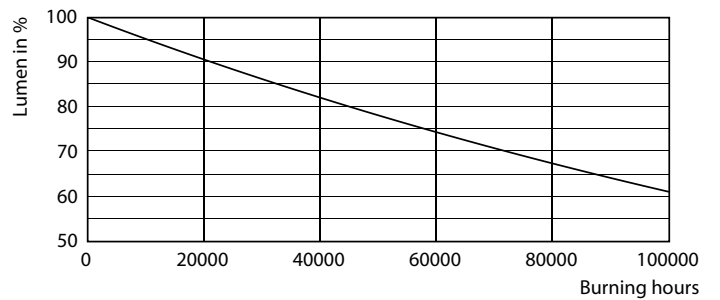
TLED_220-240V_G13-FailureRate



TLED_220-240V_G13-LifetimeVsTc



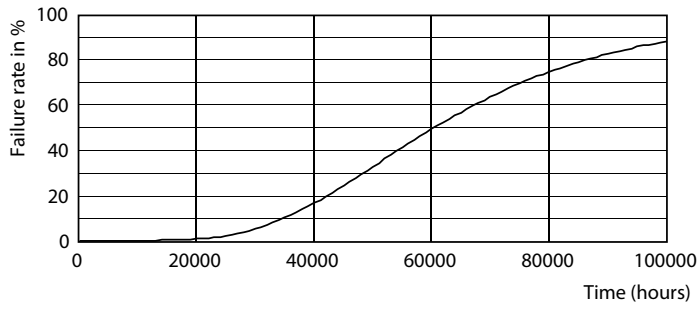
TLED_220-240V_G13-LumenVsTc



TLED_220-240V_G13

MASTER LEDtube EM/Mains T8

Lifetime



TLED_220-240V_G13





MASTER LEDtube EM/ Mains T8

MAS LEDtube 1200mm UO 15.5W 865 T8

The Philips MASTER LEDtube integrates a LED light source into a traditional fluorescent form factor. Its unique design creates a perfectly uniform visual appearance which cannot be distinguished from traditional fluorescent. For those that are looking for value for money within limited budget and re-lamping efforts for better light effect and lifetime.

Product data

General Information	
Cap-Base	G13 [Medium Bi-Pin Fluorescent]
Nominal Lifetime (Nom)	60000 h
Switching Cycle	200000X
B50L70	60000 h

Light Technical	
Color Code	865 [CCT of 6500K]
Beam Angle (Nom)	160 °
Luminous Flux (Nom)	2500 lm
Luminous Flux (Rated) (Nom)	2500 lm
Rated Beam Angle	160 °
Correlated Color Temperature (Nom)	6500 K
Color Consistency	<6
Color Rendering Index (Nom)	83
LLMF At End Of Nominal Lifetime (Nom)	70 %

Operating and Electrical	
Input Frequency	50 to 60 Hz
Power (Rated) (Nom)	15.5 W

Lamp Current (Max)	73 mA
Lamp Current (Min)	67 mA
Starting Time (Nom)	0.5 s
Warm Up Time to 60% Light (Nom)	0.5 s
Power Factor (Nom)	0.9
Voltage (Nom)	220-240 V

Temperature	
T-Ambient (Max)	45 °C
T-Ambient (Min)	-20 °C
T-Storage (Max)	65 °C
T-Storage (Min)	-40 °C
T-Case Maximum (Nom)	55 °C

Controls and Dimming	
Dimmable	No

Mechanical and Housing	
Product Length	1200 mm

MASTER LEDtube EM/Mains T8

Approval and Application

Energy Efficiency Label (EEL)	A++
Energy Saving Product	Yes
Approval Marks	RoHS compliance TUV CE marking KEMA Keur certificate
Energy Consumption kWh/1000 h	16 kWh

Product Data

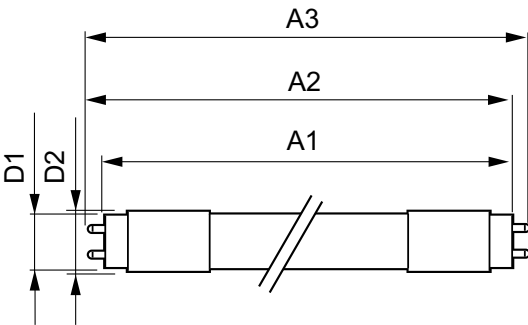
Full product code	871869964725400
-------------------	-----------------

Order product name	MAS LEDtube 1200mm UO 15.5W 865 T8
EAN/UPC - Product	8718699647254
Order code	929002020702
Numerator - Quantity Per Pack	1
Numerator - Packs per outer box	10
Material Nr. (12NC)	929002020702
Net Weight (Piece)	0.251 kg

Warnings and Safety

- NOTES: The overall energy efficiency and light distribution of any installation that uses these lamps are determined by the design of the installation.

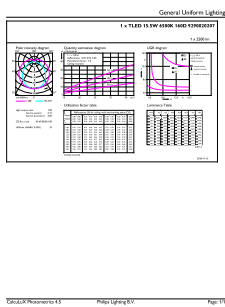
Dimensional drawing



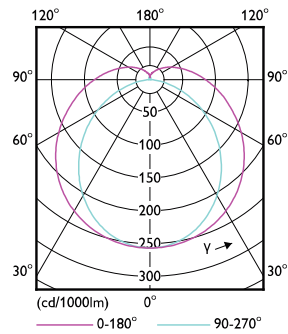
TLED 4ft 220-240V 15.5-36W2500lm6500KG13

Product	D1	D2	A1	A2	A3
MAS LEDtube 1200mm UO 15.5W 865 T8	25.8 mm	28 mm	1198.2 mm	1205.3 mm	1212.4 mm

Photometric data



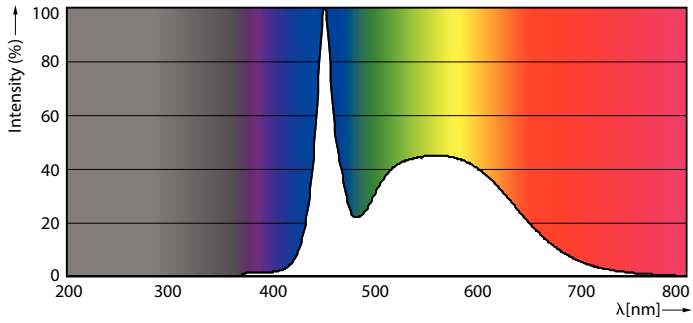
TLED_4ft_220-240V_15.5-36W2500lm_6500K_G13



TLED_4ft_220-240V15.5-36W_G13-LDD

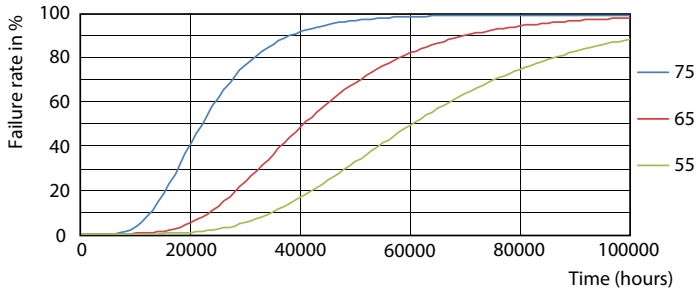
MASTER LEDtube EM/Mains T8

Photometric data

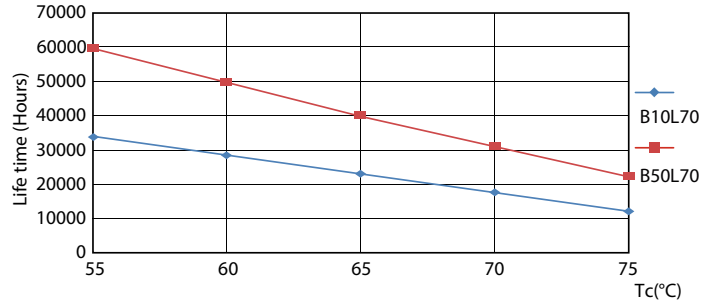


TLED_4ft_220-240V_15.5-36W2500lm_6500K_G13

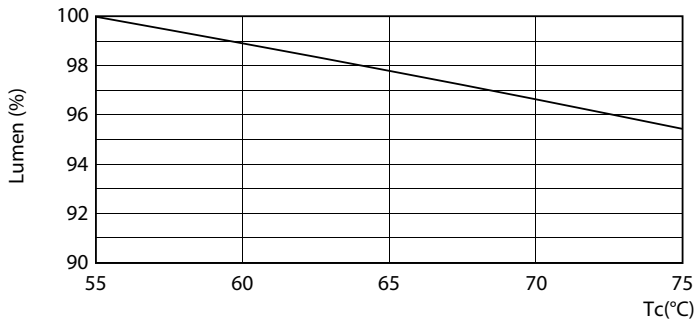
Lifetime



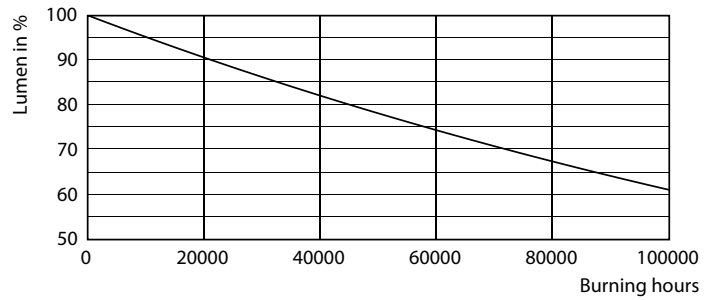
TLED_220-240V_G13-FailureRate



TLED_220-240V_G13-LifetimeVsTc



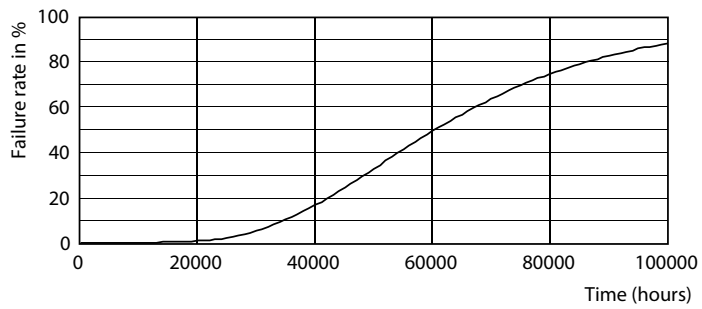
TLED_220-240V_G13-LumenVsTc



TLED_220-240V_G13

MASTER LEDtube EM/Mains T8

Lifetime



TLED_220-240V_G13

