

# MASTER LEDtube EM/ Mains T8

## MAS LEDtube 1500mm UE 21.5W 840 T8

The Philips MASTER LEDtube integrates a LED light source into a traditional fluorescent form factor. Its unique design creates a perfectly uniform visual appearance which cannot be distinguished from traditional fluorescent. For those that are looking for value for money within limited budget and re-lamping efforts for better light effect and lifetime.

### Product data

General Information	
Cap-Base	G13 [ Medium Bi-Pin Fluorescent]
RoHS mark	RoHS mark
Nominal Lifetime (Nom)	70000 h
Switching Cycle	200000X
B50L70	70000 h h
Light Technical	
Color Code	840 [ CCT of 4000K]
Beam Angle (Nom)	160 °
Luminous Flux (Nom)	3700 lm
Luminous Flux (Rated) (Nom)	3700 lm
Rated Beam Angle	160 °
Correlated Color Temperature (Nom)	4000 K
Color Consistency	<6
Color Rendering Index (Nom)	83
LLMF At End Of Nominal Lifetime (Nom)	70 %
Operating and Electrical	
Input Frequency	50 to 60 Hz

Power (Rated) (Nom)	21.5 W
Lamp Current (Max)	111 mA
Lamp Current (Min)	83 mA
Starting Time (Nom)	0.5 s
Warm Up Time to 60% Light (Nom)	0.5 s
Power Factor (Nom)	0.9
Voltage (Nom)	220-240 V
Temperature	
T-Ambient (Max)	35 °C
T-Ambient (Min)	-20 °C
T-Storage (Max)	65 °C
T-Storage (Min)	-40 °C
T-Case Maximum (Nom)	60 °C
Controls and Dimming	
Dimmable	No

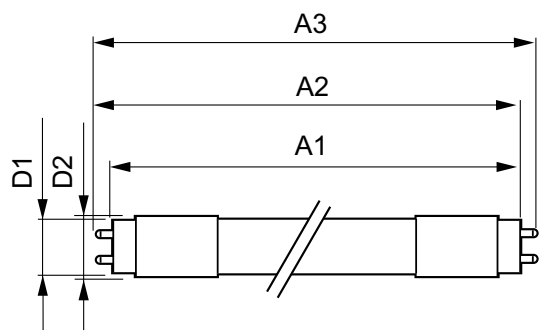
# MASTER LEDtube EM/Mains T8

Mechanical and Housing	
Product Length	1500 mm
Approval and Application	
Energy Efficiency Label (EEL)	A++
Energy Saving Product	Yes
Approval Marks	TUV CE marking RoHS compliance KEMA Keur certificate
Energy Consumption kWh/1000 h	22 kWh
Product Data	
Full product code	871869673154300

## Warnings and Safety

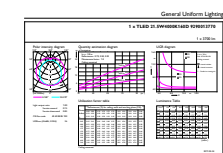
- NOTES: The overall energy efficiency and light distribution of any installation that uses these lamps are determined by the design of the installation.

## Dimensional drawing



TLED 5ft 21.5-58W 3700lm 4000K G13 ND

## Photometric data

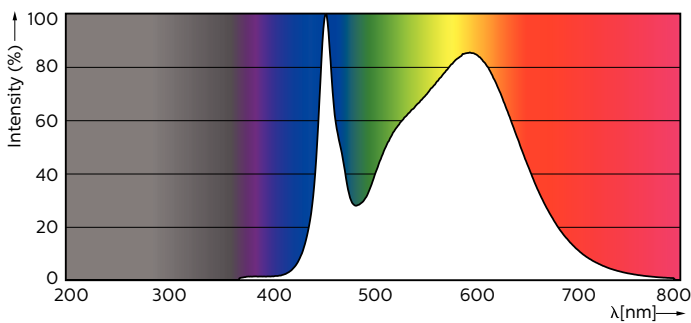


LEDtube 1500mm 22W G13 840 3700lm

LEDtube 1500mm 22W G13 840 3700lm

Order product name	MAS LEDtube 1500mm UE 21.5W 840 T8
EAN/UPC - Product	8718696731543
Order code	929001377002
Numerator - Quantity Per Pack	1
Numerator - Packs per outer box	10
Material Nr. (12NC)	929001377002
Net Weight (Piece)	0.270 kg

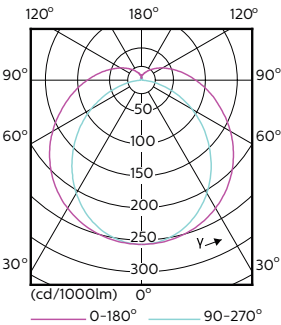
Product	D1	D2	A1	A2	A3
MAS LEDtube 1500mm UE 21.5W 840 T8	25.8 mm	28 mm	1498.8 mm	1505.9 mm	1513 mm



LEDtube 1500mm 22W G13 840 3700lm

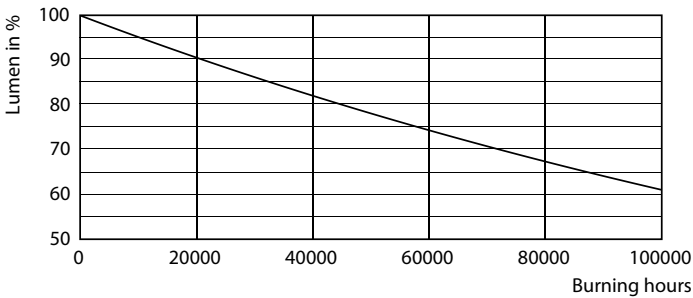
MASTER LEDtube EM/Mains T8

Photometric data

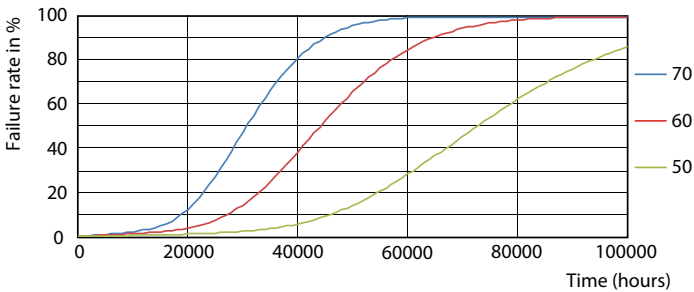


LEDtube 1200mm 15W G13 840 2500lm

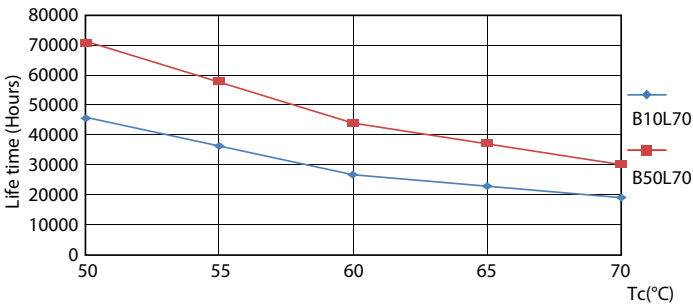
Lifetime



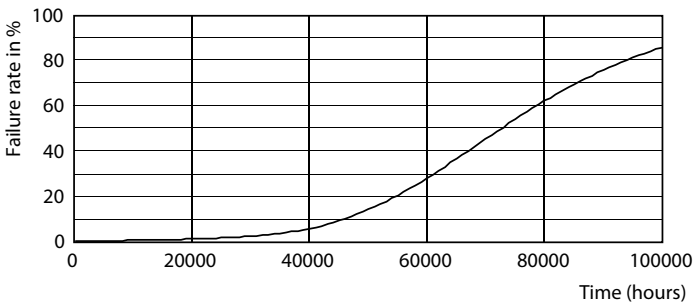
LEDtube G13 ND



LEDtube G13 ND FailureRate



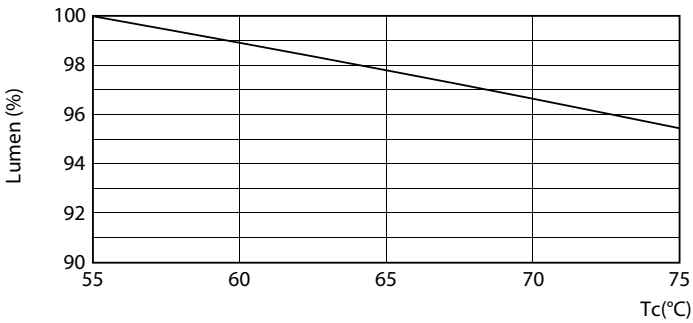
LEDtube G13 ND LifetimeVsTc



LEDtube G13 ND

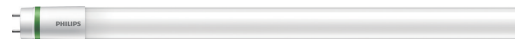
MASTER LEDtube EM/Mains T8

Lifetime



LEDtube G13 21.5W ND LumenVsTc





# MASTER LEDtube EM/ Mains T8

## MAS LEDtube 1500mm UE 21.5W 865 T8

The Philips MASTER LEDtube integrates a LED light source into a traditional fluorescent form factor. Its unique design creates a perfectly uniform visual appearance which cannot be distinguished from traditional fluorescent. For those that are looking for value for money within limited budget and re-lamping efforts for better light effect and lifetime.

### Product data

General Information	
Cap-Base	G13 [ Medium Bi-Pin Fluorescent]
RoHS mark	RoHS mark
Nominal Lifetime (Nom)	70000 h
Switching Cycle	200000X
B50L70	70000 h h
Light Technical	
Color Code	865 [ CCT of 6500K]
Beam Angle (Nom)	160 °
Luminous Flux (Nom)	3700 lm
Luminous Flux (Rated) (Nom)	3700 lm
Rated Beam Angle	160 °
Correlated Color Temperature (Nom)	6500 K
Color Consistency	<6
Color Rendering Index (Nom)	83
LLMF At End Of Nominal Lifetime (Nom)	70 %
Operating and Electrical	
Input Frequency	50 to 60 Hz

Power (Rated) (Nom)	21.5 W
Lamp Current (Max)	111 mA
Lamp Current (Min)	83 mA
Starting Time (Nom)	0.5 s
Warm Up Time to 60% Light (Nom)	0.5 s
Power Factor (Nom)	0.9
Voltage (Nom)	220-240 V
Temperature	
T-Ambient (Max)	35 °C
T-Ambient (Min)	-20 °C
T-Storage (Max)	65 °C
T-Storage (Min)	-40 °C
T-Case Maximum (Nom)	60 °C
Controls and Dimming	
Dimmable	No

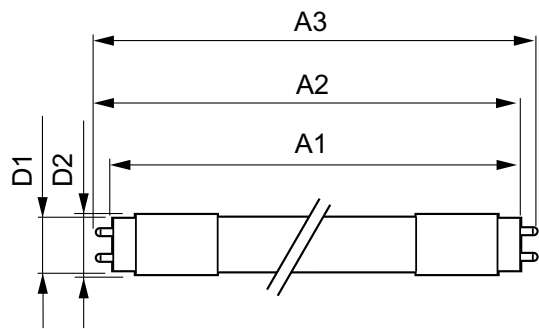
# MASTER LEDtube EM/Mains T8

Mechanical and Housing	
Product Length	1500 mm
Approval and Application	
Energy Efficiency Label (EEL)	A++
Energy Saving Product	Yes
Approval Marks	TUV CE marking RoHS compliance KEMA Keur certificate
Energy Consumption kWh/1000 h	22 kWh
Product Data	
Full product code	871869673156700

## Warnings and Safety

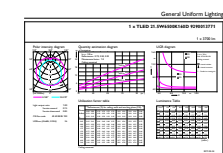
- NOTES: The overall energy efficiency and light distribution of any installation that uses these lamps are determined by the design of the installation.

## Dimensional drawing



TLED 5ft 21.5-58W 3700lm 6500K G13 ND

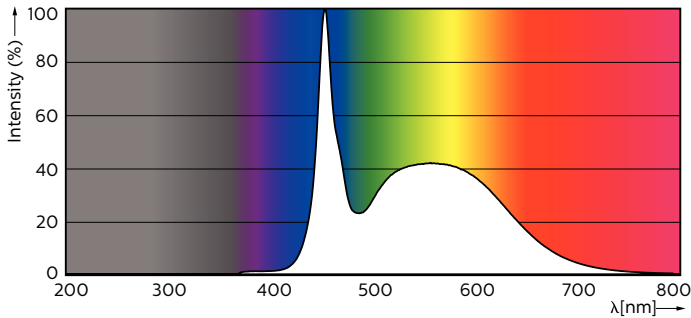
## Photometric data



LEDtube 1500mm 22W G13 865 3700lm

Order product name	MAS LEDtube 1500mm UE 21.5W 865 T8
EAN/UPC - Product	8718696731567
Order code	929001377102
Numerator - Quantity Per Pack	1
Numerator - Packs per outer box	10
Material Nr. (12NC)	929001377102
Net Weight (Piece)	0.270 kg

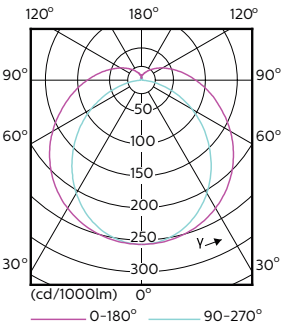
Product	D1	D2	A1	A2	A3
MAS LEDtube 1500mm UE 21.5W 865 T8	25.8 mm	28 mm	1498.8 mm	1505.9 mm	1513 mm



LEDtube 1200mm 15W G13 865 2500lm

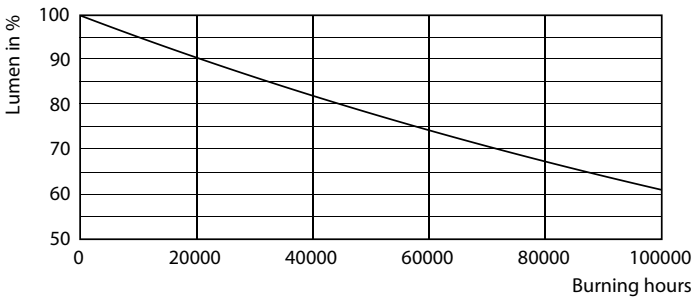
MASTER LEDtube EM/Mains T8

Photometric data

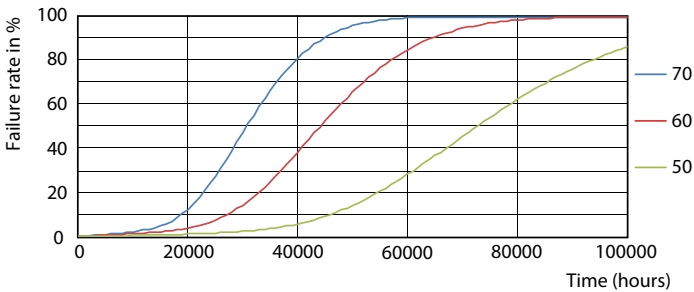


LEDtube 1200mm 15W G13 840 2500lm

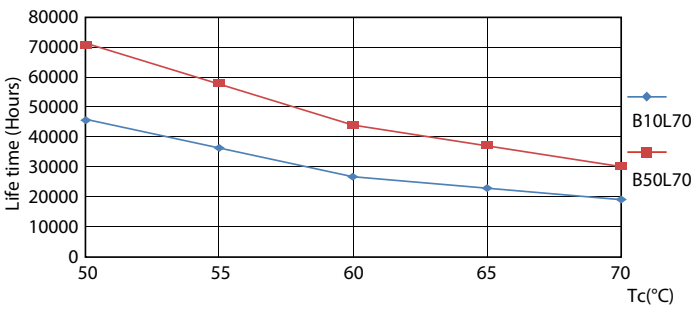
Lifetime



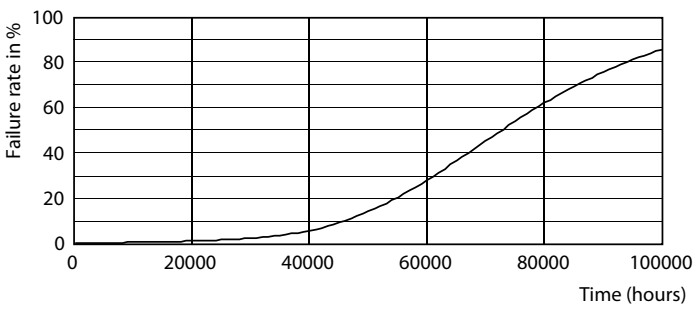
LEDtube G13 ND



LEDtube G13 ND FailureRate



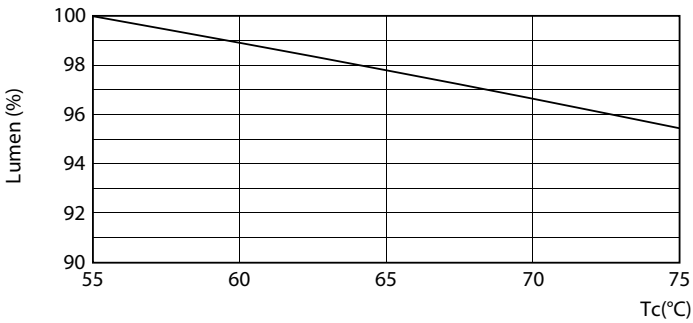
LEDtube G13 ND LifetimeVsTc



LEDtube G13 ND

MASTER LEDtube EM/Mains T8

Lifetime



LEDtube G13 21.5W ND LumenVsTc

