

**PHILIPS**

Public lighting

TrueForce Urban



**NEW!**

# The perfect switch from HID to LED

A cost-effective LED lamp alternative for urban lighting

# TrueForce Urban.

## Save energy, retain your uniqueness

Now there is a cost-effective alternative that makes it easy to upgrade urban lighting by using LED. Philips TrueForce is the first direct replacement with exactly the same size as HPL/HQL 125W. This ensures a perfect fit with existing modern and traditional luminaires. It's the simplest way to upgrade to LED while keeping your initial investment low.



Upgrade your urban lighting to LED and benefit from **instant saving and low initial costs**

- Fast payback – mostly less than two years
- Easy adoption – no need to change the fixture
- Perfect Fit – same size as HPL/HQL 125W
- Sustainability – low energy consumption
- Enhance comfort, safety and productivity

Easy installation  
with bypassing  
the ballast\*



HPL 125W

LED 33W

SON 70W

LED 33W

HPL 80W

LED 25W

SON 50W

LED 25W

\*It is recommended to connect TrueForce Urban on direct mains (220-240V), please refer to Installation Guide for details.





**TrueForce benefits.**  
**Powerful reasons to switch to LED.**



Energy saving  
up to 75%



Direct LED replacement  
solution without  
changing the fixture



Reliable lifetime up  
to 50.000 hours



Optically efficient, emits light  
towards usage direction



Right lamp size and lighting  
distribution for direct retrofit  
with a peace of mind



Pleasant white light  
with CRI 70

**Save on urban lighting**

TrueForce LED lamps are a high quality alternative for conventional lamps used in existing decorative and functional applications. Not only do they save up to 75% in energy, they're also easy to install, typically saving between 50 and 90 percent of the installation time required for other LED alternatives.

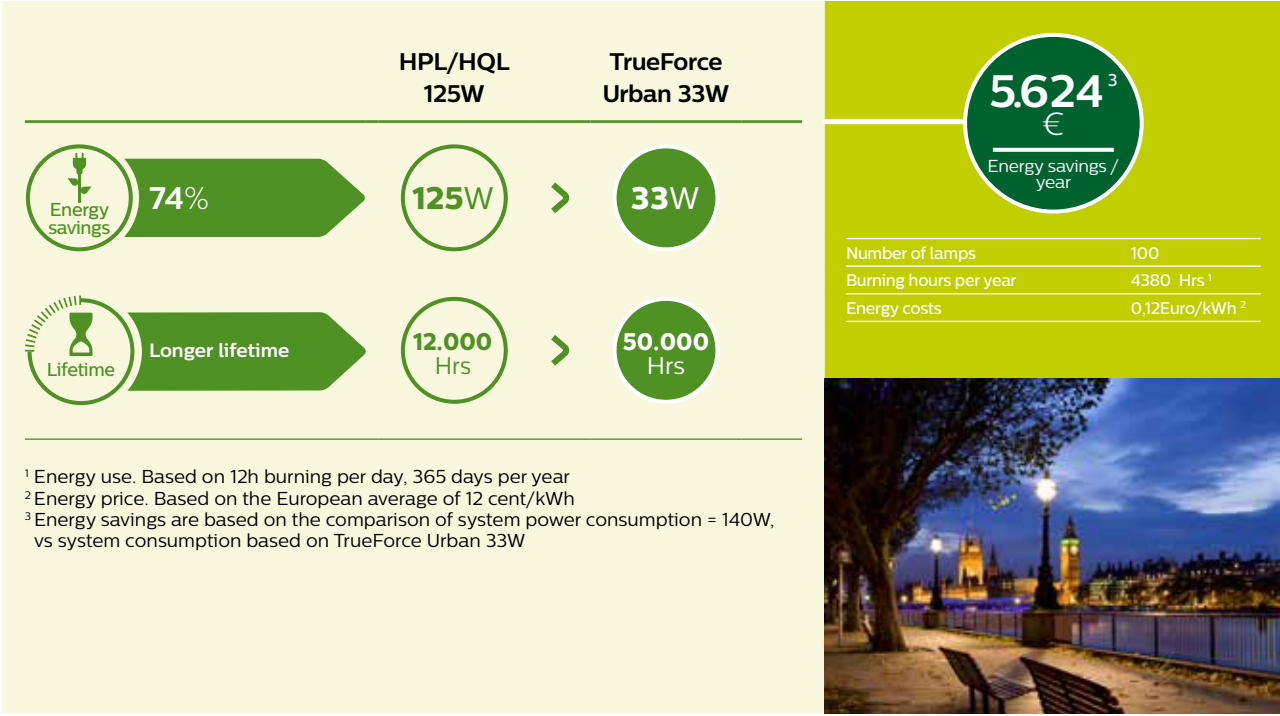
**Right light distribution**

With the same burning arc length and location as HID, TrueForce LED distributes light to exactly where it's needed. The Color Rendering Index (CRI) of 70+ gives a pleasant white light to enhance comfort, safety and productivity. It combines the right lumen package with high system efficacy to maximize energy saving.


**Low investment, long lifetime**

With a low initial investment and fast payback time, TrueForce is the number one choice for anyone looking to upgrade to LED. The TrueForce range also offers a reliable lifetime of up to 50,000 hours. It ensures low maintenance needs and has a five-year warranty. So you can look forward to long-term savings too.


# Calculate your energy savings




# Technical specifications




TrueForce post-top







4000



E27



NON-DIMMABLE



50.000 H

A<sup>+</sup>

A<sup>++</sup>

EEL

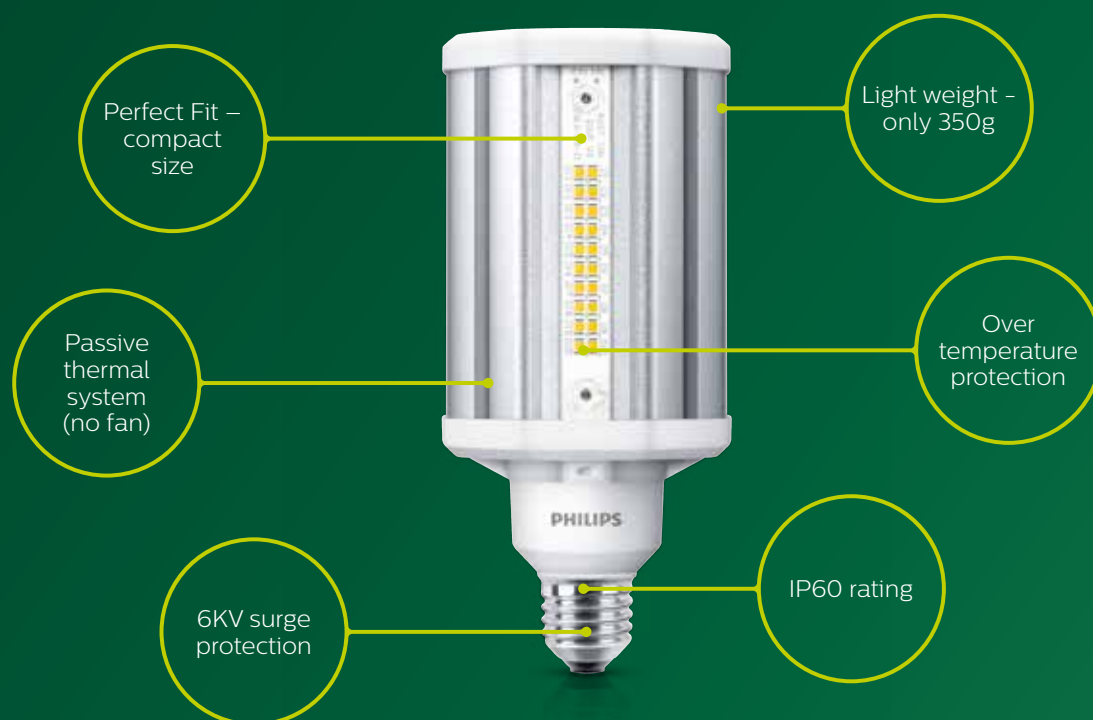
84

178

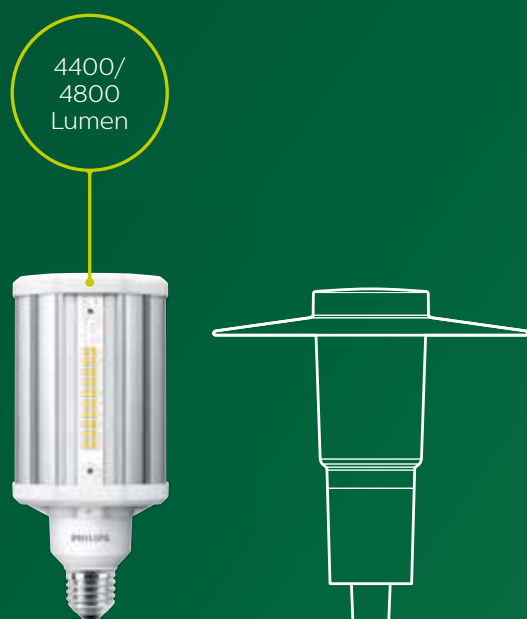
DIMENSIONS

Product type	LED	Tradit- ional	Lumen output	Efficacy	Voltage	Input Current	Life time	Starting time	Energy class	Bulb shape	EOC
	W	W	lm	lm/W	V	mA		s	(EU only)		(8718696)
TForce LED HPL ND 48-33W E27 740 CL	33	125	4800	145	220-240	165	50.000	<0,5	A <sup>++</sup>	HPL-E	68696600
TForce LED HPL ND 44-33W E27 740 FR	33	125	4400	133	220-240	165	50.000	<0,5	A <sup>++</sup>	HPL-E	68698000
TForce LED HPL ND 32-25W E27 740 CL	25	80	3200	128	220-240	135	50.000	<0,5	A <sup>++</sup>	HPL-E	68700000
TForce LED HPL ND 29-25W E27 740 FR	25	80	2900	116	220-240	135	50.000	<0,5	A <sup>+</sup>	HPL-E	68702400

# Design highlights

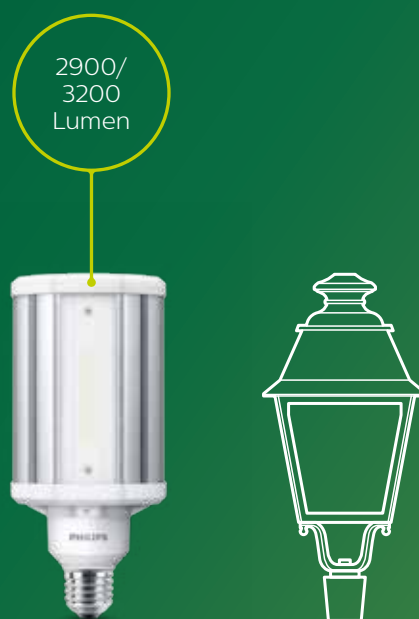


Clear and Frosted lens versions for best light effect in existing luminaires.



## Clear version

10% higher light output for luminaires/applications where LED lamp is not visible or its appearance is not critical.



## Frosted version

For transparent luminaires/applications to provide diffused light effect and keep traditional look & feel.

