

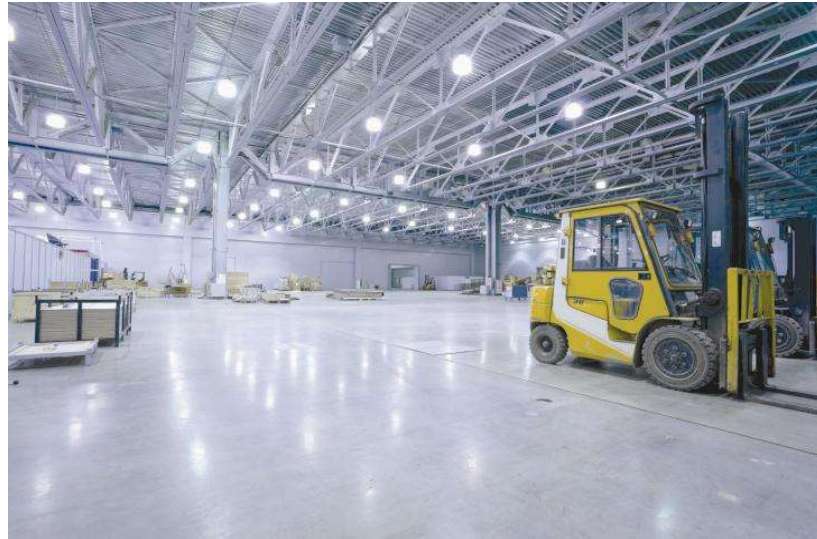
GreenPerform Highbay G3 *BY698X PIR version*



innovation  you

PHILIPS

Features and Benefits



- System efficacy @ 130m/W; 11000/16000/20000/29000lm - High energy saving – up to 65% comparing to HPI-P system
- PIR (1~10V) motion detection sensor version - Achieve additional 30% energy saving through occupancy and movement based dimming
- Networked lighting with ZigBee control and PIR/DDR sensor - Achieve additional energy saving (depends on user's behavior) through network and PIR/DDR dimming (Coming in December)
- CRI >80; UGR 20 (NB) ~ UGR26 (WB) - Comfortable light with low UGR and accurate color
- Lifetime 50Khrs; IP65, IK07; CB/EMC/CE/ASNZ approbations – Safe and Reliable performance
- Suitable for hook, pipe, bracket mounting; Slimmer and lighter - Easy for installation and easy for maintenance

High energy saving






Additional 30% saving !

65%



75%

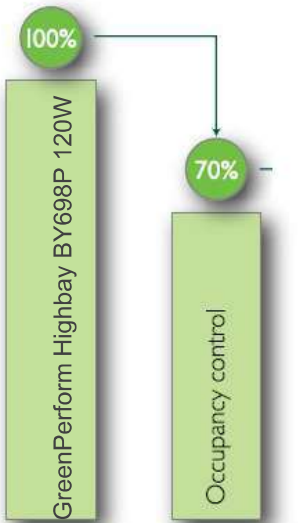
	 HPI P 400W	 BY698P LED200	 BY698 +PIR sensor)
Lamp wattage	400 W	155W	155 W
System wattage	440 W	155 W	109 W <small>(Dimming to 25% output at 40% operation time)</small>
Initial lumen output	32000 lm	20000 lm	20000 lm
Light Out Put Ratio (LOR) (Luminaire Optical design)	65%	100%	100%
System Lumen Output	20800 lm	20000 lm	20000 lm
<i>Total Energy Saving (same lux level)</i>		65%	75%

** For retrofit in existing plants, please validate the present lux level and decide the most optimum offering from GP HB G3

Movement detection - 30% more saving

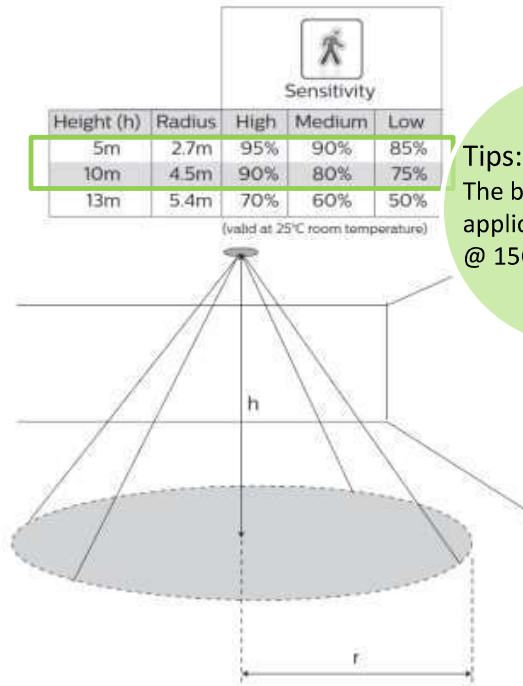


- Dimming automatic with motion detector
- Max. height 13m, Max. diameter 10m
- Default setting: 25% lux after 15 minutes
- Minimum Dimming level is fixed as 25%
- 3 options on delay timing (1/5/15 minutes), could be customized



More saving 30%
(25% lux @40% operation time)

BY698X PIR Sensor ✓



Tips:
The best performance application: 5~10m @ 15C~25C

LRM1657 movement detection information



Product Specification – PIR

Types	BY698P LED110	BY698P LED160	BY698P LED200	BY698P LED300
System Lumen	11000lm	16000lm	20000lm	29000lm
System Power	85W	120W	155W	225W
System efficacy	129lm/W	133lm/W	129lm/W	129lm/W
CCT	CW (6500K)/ NW (4000K)			
CRI / Color consistency	CRI > 80 ; Color consistency < 5 SDCM			
Beam Angle	NB; WB			NB E-NB (optional)
UGR	NB:20;WB:25	NB:21;WB:26		E-NB:20; NB:22
IP/IK rating	IP65 / IK07			
Classification	Class I			
Power factor	PF: 0.95			
Input Voltage	220-240V, 50/60 Hz			
Surge	L,N 2KV; L,N-GND 4KV			
Driver	1~10V dimming			
Operation Temperature	-30°C to +50°C (Ta35°C)			
Lifetime L70B50(hrs)	50,000hrs@Ta35°C			
Material	Housing: Aluminum Die-casting / Lens cover: Optical PC			
Mounting/ Installation	Pendant (pole, hook)			
Dimensions	Dia : 379mm Ht : 96mm	Dia : 417mm Ht : 105mm	Dia : 452mm Ht : 107mm	Dia : 530mm Ht : 120mm
Weight	3.6kgs	4.4kgs	5.1kgs	7.4kgs
Certificate	CB/EMC/ASNZ/CE/TISI			

Product order information -3m cable version

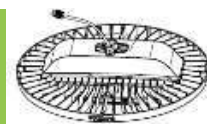


12ncs	Designation	Lumen	CCT	Power	Driver	Cable	Supplier code
911401867199	BY698X LED110/CW PIR NB L3000 EN	11000	6500K	85W	1~10V	3m	266001
911401867299	BY698X LED110/NW PIR NB L3000 EN	11000	4000K	85W	1~10V	3m	266001
911401867399	BY698X LED110/CW PIR WB L3000 EN	11000	6500K	85W	1~10V	3m	266001
911401867499	BY698X LED110/NW PIR WB L3000 EN	11000	4000K	85W	1~10V	3m	266001
911401866799	BY698X LED160/CW PIR NB L3000 EN	16000	6500K	120W	1~10V	3m	266001
911401866899	BY698X LED160/NW PIR NB L3000 EN	16000	4000K	120W	1~10V	3m	266001
911401866999	BY698X LED160/CW PIR WB L3000 EN	16000	6500K	120W	1~10V	3m	266001
911401867099	BY698X LED160/NW PIR WB L3000 EN	16000	4000K	120W	1~10V	3m	266001
911401866399	BY698X LED200/CW PIR NB L3000 EN	20000	6500K	155W	1~10V	3m	266001
911401866499	BY698X LED200/NW PIR NB L3000 EN	20000	4000K	155W	1~10V	3m	266001
911401866599	BY698X LED200/CW PIR WB L3000 EN	20000	6500K	155W	1~10V	3m	266001
911401866699	BY698X LED200/NW PIR WB L3000 EN	20000	4000K	155W	1~10V	3m	266001
911401866199	BY698X LED300/CW PIR NB L3000 EN	29000	6500K	225W	1~10V	3m	266001
911401866299	BY698X LED300/NW PIR NB L3000 EN	29000	4000K	225W	1~10V	3m	266001

Options via Special Request

- E-NB beam angle choice for 29000lm
- WW (3000K CCT) choice

Product order information –IP65 connector version



12ncs	Designation	Lumen	CCT	Power	Driver	Cable	Supplier code
911401865999	BY698X LED110/NW PIR NB EN	11000	4000K	85W	1~10V	0.3m	266001
911401866099	BY698X LED110/NW PIR WB EN	11000	4000K	85W	1~10V	0.3m	266001
911401865799	BY698X LED160/NW PIR NB EN	16000	4000K	120W	1~10V	0.3m	266001
911401865899	BY698X LED160/NW PIR WB EN	16000	4000K	120W	1~10V	0.3m	266001
911401865599	BY698X LED200/NW PIR NB EN	20000	4000K	155W	1~10V	0.3m	266001
911401865699	BY698X LED200/NW PIR WB EN	20000	4000K	155W	1~10V	0.3m	266001
911401865499	BY698X LED300/NW PIR NB EN	29000	4000K	225W	1~10V	0.3m	266001

Options via Special Request

- E-NB beam angle choice for 29000lm
- WW (3000K) & CW (6500K CCT) choice for IP65 connector version