



# The most cost-effective outdoor spot light with better efficient and performance

## UniPoint

Our UniPoint is designed to produce both general and accent lighting while concealing the body of the device, allowing only the light to be exposed. This design can be used to change the surroundings by adding subtle or dramatic contrasting effects. It also includes exclusive features such as energy efficiency, chromatic quality and miniaturisation. We guarantee extreme reliability and high level of resistance to adverse weather conditions and vandalism

### Benefits

- In stylish and very compact design
- Price point versus PHILIPS standards
- Effortless and flexible installation
- Customising for you

### Features

- High quality LED
- Different choice of light source and beam angles
- Die-cast aluminium housing + dark grey sand coating to ensure anticorrosion
- Structural waterproof technology
- IP66
- IK06
- Quality and reliability in line with all regulations

## Application

- Buildings
- Statues
- Columns
- Pillars
- Eaves

## Versions



### Approval and Application

Mech. impact protection code IK06

### Controls and Dimming

Dimmable No

### General Information

CE mark CE mark

Optical cover/lens type GB

Driver included No

Light source replaceable No

### Initial Performance (IEC Compliant)

Init. Colour Rendering Index >80

### Mechanical and Housing

Colour Dark Grey

### General Information

Order Code	Full Product Name	Luminaire light beam		Light source colour	Optic type
		spread			
911401711442	BGP312 1LED 2700K NB GG	10°		827 warm white	Narrow beam angle 10°
911401711452	BGP312 1LED 2700K MB GG	25°		827 warm white	Medium beam angle 25°
911401711462	BGP312 1LED 2700K WB GG	40°		827 warm white	Wide beam angle 42°
911401711472	BGP312 1LED 3000K NB GG	10°		830 warm white	Narrow beam angle 10°
911401711482	BGP312 1LED 3000K MB GG	25°		830 warm white	Medium beam angle 25°
911401711492	BGP312 1LED 3000K WB GG	40°		830 warm white	Wide beam angle 42°
911401711502	BGP312 1LED 4000K NB GG	10°		840 neutral white	Narrow beam angle 10°
911401711512	BGP312 1LED 4000K MB GG	25°		840 neutral white	Medium beam angle 25°
911401711522	BGP312 1LED 4000K WB GG	40°		840 neutral white	Wide beam angle 42°
911401711532	BGP312 3LED 2700K NB GG	10°		827 warm white	Narrow beam angle 10°
911401711542	BGP312 3LED 2700K MB GG	25°		827 warm white	Medium beam angle 25°
911401711552	BGP312 3LED 2700K WB GG	40°		827 warm white	Wide beam angle 42°
911401711562	BGP312 3LED 3000K NB GG	10°		830 warm white	Narrow beam angle 10°
911401711572	BGP312 3LED 3000K MB GG	25°		830 warm white	Medium beam angle 25°
911401711582	BGP312 3LED 3000K WB GG	40°		830 warm white	Wide beam angle 42°
911401711592	BGP312 3LED 4000K NB GG	10°		840 neutral white	Narrow beam angle 10°
911401711602	BGP312 3LED 4000K MB GG	25°		840 neutral white	Medium beam angle 25°
911401711612	BGP312 3LED 4000K WB GG	40°		840 neutral white	Wide beam angle 42°
911401711622	BGP312 5LED 2700K NB GG	10°		827 warm white	Narrow beam angle 10°
911401711632	BGP312 5LED 2700K MB GG	25°		827 warm white	Medium beam angle 25°
911401711642	BGP312 5LED 2700K WB GG	40°		827 warm white	Wide beam angle 42°
911401711652	BGP312 5LED 3000K NB GG	10°		830 warm white	Narrow beam angle 10°
911401711662	BGP312 5LED 3000K MB GG	25°		830 warm white	Medium beam angle 25°
911401711672	BGP312 5LED 3000K WB GG	40°		830 warm white	Wide beam angle 42°
911401711682	BGP312 5LED 4000K NB GG	10°		840 neutral white	Narrow beam angle 10°
911401711692	BGP312 5LED 4000K MB GG	25°		840 neutral white	Medium beam angle 25°
911401711702	BGP312 5LED 4000K WB GG	40°		840 neutral white	Wide beam angle 42°

## Initial Performance (IEC Compliant)

Order Code	Full Product Name	Init. Corr. Colour	
		Temperature	Initial luminous flux
911401711442	BGP312 1LED 2700K NB GG	2700 K	120 lm
911401711452	BGP312 1LED 2700K MB GG	2700 K	120 lm
911401711462	BGP312 1LED 2700K WB GG	2700 K	120 lm
911401711472	BGP312 1LED 3000K NB GG	3000 K	120 lm
911401711482	BGP312 1LED 3000K MB GG	3000 K	120 lm
911401711492	BGP312 1LED 3000K WB GG	3000 K	120 lm
911401711502	BGP312 1LED 4000K NB GG	4000 K	120 lm
911401711512	BGP312 1LED 4000K MB GG	4000 K	120 lm
911401711522	BGP312 1LED 4000K WB GG	4000 K	120 lm
911401711532	BGP312 3LED 2700K NB GG	2700 K	330 lm
911401711542	BGP312 3LED 2700K MB GG	2700 K	330 lm
911401711552	BGP312 3LED 2700K WB GG	2700 K	330 lm
911401711562	BGP312 3LED 3000K NB GG	3000 K	330 lm
911401711572	BGP312 3LED 3000K MB GG	3000 K	330 lm

Order Code	Full Product Name	Init. Corr. Colour	
		Temperature	Initial luminous flux
911401711582	BGP312 3LED 3000K WB GG	3000 K	330 lm
911401711592	BGP312 3LED 4000K NB GG	4000 K	330 lm
911401711602	BGP312 3LED 4000K MB GG	4000 K	330 lm
911401711612	BGP312 3LED 4000K WB GG	4000 K	330 lm
911401711622	BGP312 5LED 2700K NB GG	2700 K	595 lm
911401711632	BGP312 5LED 2700K MB GG	2700 K	595 lm
911401711642	BGP312 5LED 2700K WB GG	2700 K	595 lm
911401711652	BGP312 5LED 3000K NB GG	3000 K	595 lm
911401711662	BGP312 5LED 3000K MB GG	3000 K	595 lm
911401711672	BGP312 5LED 3000K WB GG	3000 K	595 lm
911401711682	BGP312 5LED 4000K NB GG	4000 K	595 lm
911401711692	BGP312 5LED 4000K MB GG	4000 K	595 lm
911401711702	BGP312 5LED 4000K WB GG	4000 K	595 lm





# UniPoint

## BGP312 1LED 4000K WB GG

Our UniPoint is designed to produce both general and accent lighting while concealing the body of the device, allowing only the light to be exposed. This design can be used to change the surroundings by adding subtle or dramatic contrasting effects. It also includes exclusive features such as energy efficiency, chromatic quality and miniaturization. We guarantee extreme reliability and high level of resistance to adverse weather conditions and vandalism

### Product data

General Information	
Light source color	840 neutral white
Light source replaceable	No
Driver/power unit/transformer	Electronic transformer
Driver included	No
Optical cover/lens type	Glass bowl/cover
Luminaire light beam spread	40°
Connection	Flying leads/wires
Cable	Cable without plug 2-pole
Protection class IEC	Safety class III
CE mark	CE mark
Warranty period	3 years
Optic type outdoor	Wide beam angle 42°
Constant light output	No
RoHS mark	RoHS mark
Light source engine type	LED
Operating and Electrical	
Input Voltage	Primary 230 V, secondary 24 V
Input Frequency	45 to 66 Hz
Inrush current	0.5 A

Inrush time	10 ms
Power Factor (Min)	0.97
Controls and Dimming	
Dimmable	No
Mechanical and Housing	
Housing Material	Aluminum die-cast
Reflector material	Glass
Optical cover/lens material	Glass
Mounting device	Allen screw fixation
Optical cover/lens shape	Conical
Optical cover/lens finish	Textured
Overall length	95.8 mm
Overall height	69.4 mm
Overall diameter	65.5 mm
Approval and Application	
Ingress protection code	IP66 [ Dust penetration-protected , jet-proof]
Mech. impact protection code	IK06 [ 1 J]

#### Initial Performance (IEC Compliant)

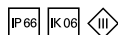
Initial luminous flux (system flux)	120 lm
Luminous flux tolerance	+/-10%
Initial LED luminaire efficacy	40 lm/W
Init. Corr. Color Temperature	4000 K
Init. Color Rendering Index	>80
Initial chromaticity	SDCM<5
Initial input power	3 W
Power consumption tolerance	+/-10%

#### Application Conditions

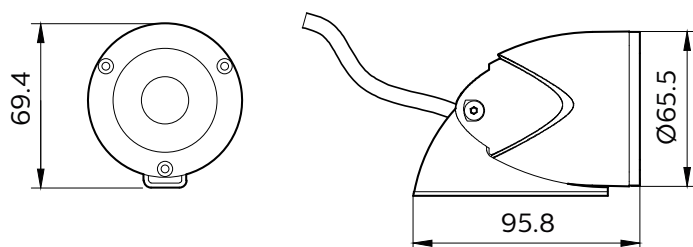
Ambient temperature range	-40 to +45 °C
---------------------------	---------------

#### Product Data

Full product code	911401711522
Order product name	BGP312 1LED 4000K WB GG
Order code	911401711522
Numerator - Quantity Per Pack	1
Numerator - Packs per outer box	32
Material Nr. (12NC)	911401711522
Net Weight (Piece)	0.399 kg



#### Dimensional drawing



BGP312 UniPoint





# UniPoint

## BGP312 3LED 3000K NB

Our UniPoint is designed to produce both general and accent lighting while concealing the body of the device, allowing only the light to be exposed. This design can be used to change the surroundings by adding subtle or dramatic contrasting effects. It also includes exclusive features such as energy efficiency, chromatic quality and miniaturization. We guarantee extreme reliability and high level of resistance to adverse weather conditions and vandalism

### Product data

General Information	
Light source color	830 warm white
Light source replaceable	No
Driver/power unit/transformer	Electronic transformer
Driver included	No
Optical cover/lens type	Glass bowl/cover
Luminaire light beam spread	10°
Connection	Flying leads/wires
Cable	Cable without plug 2-pole
Protection class IEC	Safety class III
Warranty period	3 years
Optic type outdoor	Narrow beam angle 10°
Constant light output	No
RoHS mark	RoHS mark
Light source engine type	LED
Operating and Electrical	
Input Voltage	Primary 230 V, secondary 24 V
Input Frequency	45 to 66 Hz
Inrush current	0.7 A
Inrush time	10 ms

Power Factor (Min)	0.97
Controls and Dimming	
Dimmable	No
Mechanical and Housing	
Housing Material	Aluminum die-cast
Reflector material	Glass
Optical cover/lens material	Glass
Mounting device	Allen screw fixation
Optical cover/lens shape	Conical
Optical cover/lens finish	Textured
Overall length	95.8 mm
Overall height	69.4 mm
Overall diameter	65.5 mm
Approval and Application	
Ingress protection code	IP66 [ Dust penetration-protected , jet-proof]
Mech. impact protection code	IK06 [ 1 J]

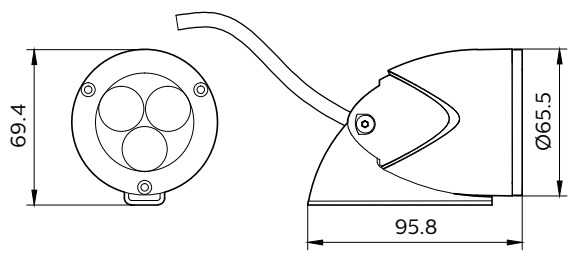
Initial Performance (IEC Compliant)	
Initial luminous flux (system flux)	330 lm
Luminous flux tolerance	+/-10%
Initial LED luminaire efficacy	55 lm/W
Init. Corr. Color Temperature	3000 K
Init. Color Rendering Index	>80
Initial chromaticity	SDCM<5
Initial Input power	6 W
Power consumption tolerance	+/-10%

Application Conditions	
Ambient temperature range	-20 to +45 °C

Product Data	
Full product code	911401710762
Order product name	BGP312 3LED 3000K NB
Order code	911401710762
Numerator - Quantity Per Pack	1
Numerator - Packs per outer box	32
Material Nr. (12NC)	911401710762
Net Weight (Piece)	0.400 kg



Dimensional drawing



BGP312 UniPoint





# UniPoint

## BGP312 5LED 3000K NB GG

Our UniPoint is designed to produce both general and accent lighting while concealing the body of the device, allowing only the light to be exposed. This design can be used to change the surroundings by adding subtle or dramatic contrasting effects. It also includes exclusive features such as energy efficiency, chromatic quality and miniaturisation. We guarantee extreme reliability and high level of resistance to adverse weather conditions and vandalism

### Product data

General Information	
Lamp colour code	830 warm white
Light source replaceable	No
Driver/power unit/transformer	ET [ Electronic transformer]
Driver included	No
Optical cover/lens type	GB [ Glass bowl/cover]
Luminaire light beam spread	10°
Connection	Flying leads/wires
Cable	Cable without plug 2-pole
Protection class IEC	Safety class III (III)
CE mark	CE mark
Warranty period	3 years
Outdoor optic type	Narrow beam angle 10°
Constant light output	No
RoHS mark	RoHS mark
LED engine type	LED
Operating and Electrical	
Input voltage	Primary 230 V, secondary 24 V
Input frequency	45 to 66 Hz
Inrush current	1 A

Inrush time	10 ms
Power factor (min.)	0.97
Controls and Dimming	
Dimmable	No
Mechanical and Housing	
Housing material	Aluminum die-cast
Reflector material	Glass
Optical cover/lens material	Glass
Mounting device	Allen screw fixation
Optical cover/lens shape	Conical
Optical cover/lens finish	Textured
Overall length	123.5 mm
Overall height	95 mm
Overall diameter	90 mm
Approval and Application	
Ingress protection code	IP66 [ Dust penetration-protected , jet-proof]
Mech. impact protection code	IK06 [ 1 J]



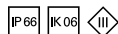
#### Initial Performance (IEC Compliant)

Initial luminous flux	595 lm
Luminous flux tolerance	+/-10%
Initial LED luminaire efficacy	59 lm/W
Lamp colour temperature	3000 K
Colour Rendering Index	>80
Initial chromaticity	SDCM<5
Initial input power	10 W
Power consumption tolerance	+/-10%

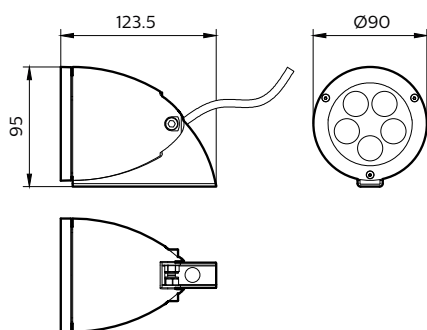
#### Product Data

Full product code	911401711652
-------------------	--------------

Order product name	BGP312 5LED 3000K NB GG
Order code	911401711652
Numerator – quantity per pack	1
Numerator – packs per outer box	9
Material no. (12NC)	911401711652
Net weight (piece)	0.777 kg



#### Dimensional drawing



BGP312 UniPoint

