



Robust. Easy.

# Smart LED Marker

Built to withstand the rigours of outdoor use, this robustly designed LED marker is easy to install and comes equipped with a mounting box.

## High reliability with robust design

- High quality long lifetime LED light source and integrated electronic driver ensure a serviceable life of more than 25,000 hours
- Proven IP67 protection and IK10 impact resistance

## Easy installation

- Comes with a mounting box for easy installation
- Integrated driver makes installation simple

**Product Range**

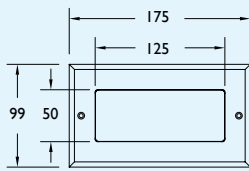
	<b>Rectangle</b>		 Neutral White 4000k
			 Warm White 3000k
	<b>Square</b>		 Neutral White 4000k
			 Warm White 3000k

**Product Range**

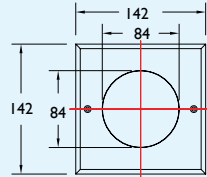
	<b>Round</b>		 Neutral White 4000k
			 Warm White 3000k

# Smart LED Marker

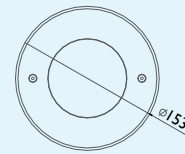
## Dimensions



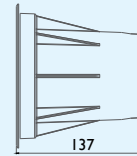
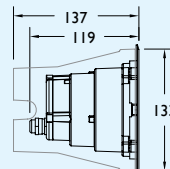
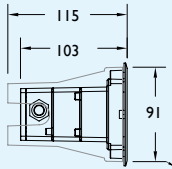
BBG150



BBG151



BBG152



Product Type	BBG150	BBG151	BBG152
Light Source		30 low power LEDs	
Light Color		Warm white (3000K), Neutral white (4000K)	
Lumens		WW: 50lm NW: 55lm	
CRI		NW>75 WW>80	
Optic		Closed, diffuser foggy glass	
Optic cover		Strengthened glass	
System power		3W	
Driver		220-240V / 50-60Hz, integrated	
Electrical class		Class I	
Degree of protection / Impact resistance		IP67 , IK10	
Resistance to heat and fire		GWT=850°C for plastic parts	
Main cabling		Via 1 x M16 cable gland accepting cable 3 core x >1.0mm <sup>2</sup>	
Connection		Connector in 3 poles accepts 3 core wire x >1.0mm <sup>2</sup>	
Material		Housing: Die cast aluminum; Surface cover: Brushed stainless; Diffuser: Tempered glass; Mounting box: Plastic	
Color		Housing: Dark grey (RAL 7043), Surface cover: Brushed stainless	
Operating temperature		-20°C < Ta < 40°C	
Lifetime		25,000 hours 70% lumen maintenance @ Ta=25°C	
Installation		In ground recessed mounting	
Weight	1.06 Kg (Rectangle)	0.97 Kg (Square)	0.94 Kg (Round)
Dimensions (mm)	Rectangle: L175 x W99 x H115	Square: L142 x W142 x H137	Round: φ153 x H137
Test House-marks		CCC	