

GreenPerform Highbay Elite



**Launch window: 2018 Q4 (PSU)
InterAct Industry 2019 Q2**

**Region: GC & GM & Europe
& Latam**

Claim/USP/Differentiator

- **Leading performance**
- **Professional lighting design**
- **Slim & Clean design**

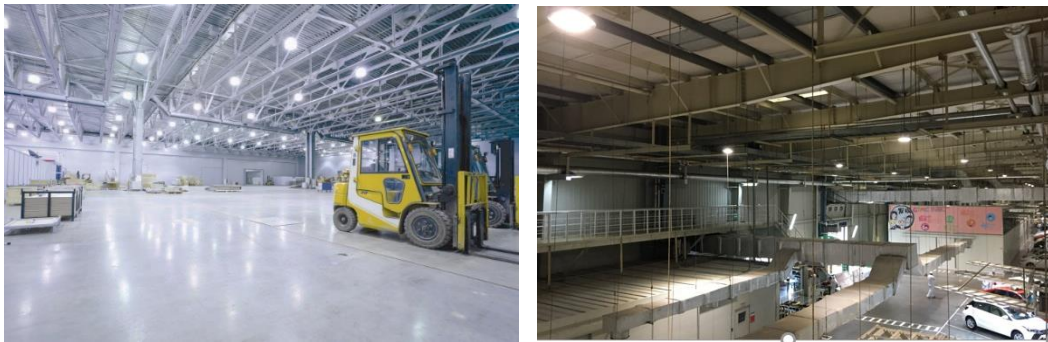
Reasons to Believe

- **High energy saving up to 88% comparing to HPI-P system**
- **Long life LED solution**
- **1-1 replace HID Highbay for all kinds of applications**
- **Superb light quality**
- **Connected system help people to 'See' their facilities off site**

Key specifications + range

- **Five lumen choices: 10000/15000/20000/25000/30000lm**
- **Leading system efficacy >145lm/W**
- **SDCM<=5; CRI>80**
- **75K hours L70B50 @Ta 35°C (calculated)**
- **IP65 & IK08 protection**
- **InterAct Industry**
- **Lighting scene management via smart-device**
- **Light asset management (Energy & Occupancy Report etc.)**

**X-Regional leverage opportunity
-To be explored**



Application Area's: General Industry Application: Factory, Warehouse, Distribution center; Indoor sport hall; Other high ceiling indoor applications: shopping mall, airport

AFSP – PSU (RMB):

Product Specification

		BY718P				
Type (Product description)		LED100	LED150	LED200	LED250	LED300
System output	Lm	10000lm	15000lm	20000lm	25000lm	30000lm
System wattage	W	68W	102W	136W	170W	204W
Light Spec	CCT	4000K/6500K/3000K (ETO)				
	CRI	>80				
Optic	BA	WB; NB				
Electrical	Voltage	220~240,50/60hz;				
System Efficacy		PSU version: 145 lm/W (Q4'18); 150lm/W (Q3'19) PSD version: 130lm/W				
SDCM		<5				
Ta /Operating Temperature		Ta 35°C (-30°C~50°C)				
Driver		Fixed/Dali ; InterAct Industry (Q2'19)				
Classification		Class I				
IP/IK rate		IP65/IK08				
THD		<15%				
PF		>0.9				
Lifetime (L70B50)		60,000hrs @Ta35°C L70B50 @75000hrs (calculated)				
Installation		Suspension (hook; pipe)				
Approbation		CCC/CB/EMC/SAA/LM79				
Servicability		Driver				
Accessory		Bracket; IP65 Connector				



Fixed version



Dali version



Sensor in design, will update the image later

InterAct Industry version

Cupola Architecture - Benefits

- 1.Thin
- 2.Recongnizable
- 3.High quality optics



Ultra-high efficient heatsink, driver box integrated

Driver box in center. Away from heat source. Plastic cover means no signal blocking

Six pcs optical chamber. Enough room for TIR lens. PCBA is economically cut.

Wires go through the channel structure in the heatsink to avoid complex water-proof connection.

Even thinner than G3; Still keep G3 looking.



GreenPeform Highbay Elite – Key features

See your facility in a new light



Energy Cost: Occupancy:



Basic

On / Off

Basic +

Dali dimmable

SMART

Motion & daylight sensor with standard settings that CAN be adjusted/customized:
 Delay time TBC
 Hold time Flexible
 Occupied 100%
 NOT occupied

Feature	Basic	Basic +	Smart
Stand-alone (on/off)	✓ standard	✓ standard	✓ standard
Dali dimmable	✗	✓ standard	✓ standard
Motion sensing configuration	✗	✓ standard	✓ standard
Daylight sensor	✗	Nice to have	✓ standard
Lighting scene management via smart-device	✗	✗	✓ standard
Automated lighting profiles & scheduling	✗	✗	✓ standard
Energy consumption feedback	✗	✗	✓ standard
Light asset management (Energy occup. Report)	✗	✗	✓ standard
Creation of rooms, zones, full space scenes setting, on/off/dim, customization group/re-group	✗	✗	✓ standard
Wireless connectivity	✗	✗	✓ standard
Intuitive dashboard	✗	✗	✓ standard
Easy to be upgraded to smart system	✓ standard	✓ standard	N/A



Specification Comparison



	GreenPerform Highbay G3	GreenPerform Highbay Elite
Installation	Suspension	Suspension
Lumen	11000/16000/20000/29000lm	10000/15000/20000/25000/30000lm
Wattage	85W/120W/155W/225W	68W/102W/136W/170W/204W
Efficacy	130lm/W	145lm/W
Beam	WB; NB	WB; NB
Driver	Fixed; Dali; Green Warehouse	Fixed; Dali; InterAct Industry
CRI	> 80	>80
IP	IP65	IP65
IK	IK07	IK08
Life time	50khrs	60khrs (L70B50 Calculated @75khrs)
Operating Temperature	-30°C~50°C	-30°C~50°C