



Pacific LED gen4

WT471C LED80S/840 PSU WB L1600

PACIFIC LED WATERPROOF - 840 neutral white - Power supply unit - Wide beam - Screw connection with pug and socket

PacificLED gen4 is a highly efficient and reliable LED waterproof luminaire that offers an excellent quality of light, with a uniform light distribution without visible striping or color artefacts. The range offers modular construction to enable ease of upgrade and maintenance. The new optical system provides distortion-free lighting with improved visual guidance, which makes it ideally suited to general industry, warehouses and parking areas. The range also offers the option of multiple optics to ensure an optimized lighting scheme for a wide range of applications. For industrial applications, PacificLED gen4 offers an open product architecture with toolless access to the gear tray and an innovative end-cap design with built-in connector for fast and easy installation. The single-piece mounting clamp ensures no small, loose components which could affect the primary production process.

Product data

General Information			
Beam angle of light source	120 °	Glow-wire test	850/5 [Temperature 850 °C, duration 5 s]
Light source color	840 neutral white	Flammability mark	D [For mounting on easily flammable surfaces]
Light source replaceable	Yes	CE mark	CE mark
Number of gear units	1 unit	ENEC mark	ENEC mark
Driver/power unit/transformer	PSU [Power supply unit]	Warranty period	5 years
Driver included	Yes	Remarks	*-Per Lighting Europe guidance paper "Evaluating performance of LED based luminaires - January 2018": statistically there is no relevant difference in lumen maintenance between B50 and for example B10. Therefore the median useful life (B50) value also represents the B10 value.
Optic type	WB [Wide beam]	Constant light output	No
Luminaire light beam spread	110° x 110°		
Connection	SI-PS [Screw connection with pug and socket]		
Cable	-		
Protection class IEC	Safety class I (I)		

Pacific LED gen4

Number of products on MCB of 16 A type B	24
RoHS mark	RoHS mark
Product family code	WT471C [PACIFIC LED WATERPROOF]

Operating and Electrical

Input Voltage	220-240 V
Input Frequency	50 to 60 Hz
Inrush current	17.8 A
Inrush time	0.282 ms
Power Factor (Min)	0.97

Controls and Dimming

Dimmable	No
----------	----

Mechanical and Housing

Housing Material	Polycarbonate
Reflector material	-
Optic material	Polycarbonate
Optical cover/lens material	Polycarbonate
Fixation material	Steel
Optical cover/lens finish	Clear
Overall length	1621 mm
Overall width	96 mm
Overall height	108 mm

Approval and Application

Ingress protection code	IP66 [Dust penetration-protected, jet-proof]
Mech. impact protection code	IK08 [5 J vandal-protected]

Initial Performance (IEC Compliant)

Initial luminous flux (system flux)	7992 lm
Luminous flux tolerance	+/-7%
Initial LED luminaire efficacy	138 lm/W

Init. Corr. Color Temperature	4000 K
Init. Color Rendering Index	>80
Initial chromaticity	(0.38, 0.38) SDCM <3
Initial input power	58 W
Power consumption tolerance	+/-11%

Over Time Performance (IEC Compliant)

Control gear failure rate at median useful life 50000 h	5 %
Control gear failure rate at median useful life 100000 h	10 %
Lumen maintenance at median useful life* 50000 h	L80
Lumen maintenance at median useful life* 100000 h	L70

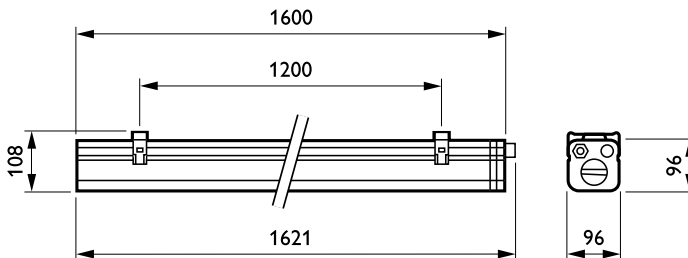
Application Conditions

Ambient temperature range	-25 to +45 °C
Performance ambient temperature Tq	25 °C
Suitable for random switching	Not applicable

Product Data

Full product code	871869638013000
Order product name	WT471C LED80S/840 PSU WB L1600
EAN/UPC - Product	8718696380130
Order code	38013000
Numerator - Quantity Per Pack	1
Numerator - Packs per outer box	1
Material Nr. (12NC)	910925863891
Net Weight (Piece)	3.150 kg

Dimensional drawing



Pacific LED WT470C-WT482C

Pacific LED gen4



PACIFIC LED WT470/471/480/481C/X

Mounting instructions

Instructions de montage
Montageanleitung
Montage instruktio
Instruzioni di montaggio

Instrucciones de montaje
Instruções de montagem
Monteringsinstruktioner
Monteringsvejledning

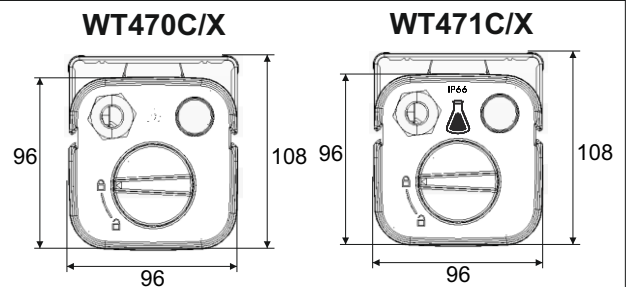
Kokoonpano- ja kiinnitysohjeet
Montaj yönergeleri
Szerelési utasítások
Instrucja montażu

Návod k montáži
Návod k montáži

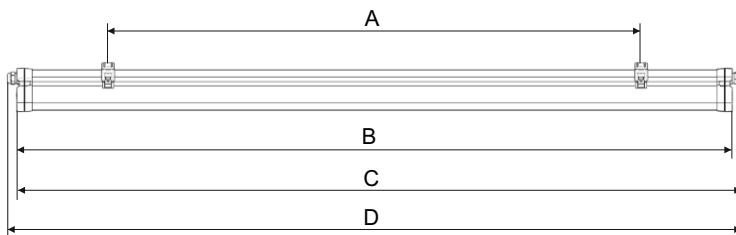
LEDs ~220V...240V
50 Hz/60 Hz
max +45°C
PSD -25°C min
PSU -25°C min
30

CE IP66
min 30 cm min 30 cm min 30 cm
CE 0682 IK08

Luminaire type	Driver	PSU/PSD	Max No of luminaires on MCB (16A type-B)*	Inrush current Peak [A/μS]
LED23S LED42S	35W	PSD	24	21/280
		PSU	33	15.1/230
LED35S LED64S LED80S	60W	PSD	24	21/280
		PSU	24	17.8/282
LED64S LED80S	100W	PSD	18	4.5/1000

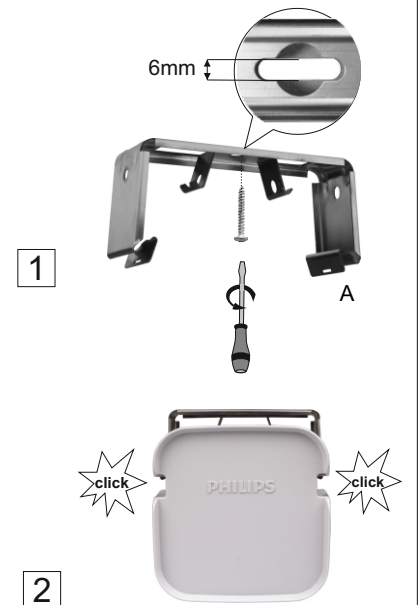


* Depends on the parasitic capacity and inductance of the power mains network

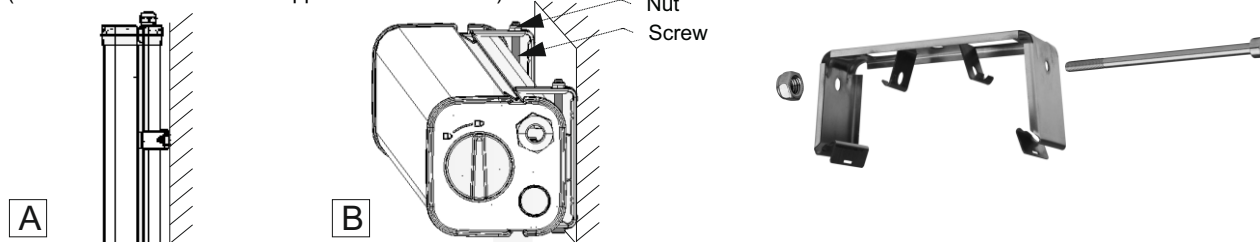


Luminaire type	A [mm]	B [mm]	C [mm]	D [mm]	kg max
L700	450	700	721		1,8
LI300	900	1300	1321		2,7
LI600	1200	1600	1621		3,2
TW1/TW3 LI300	900	1300	1321	1342	2,9
TW1/TW3 LI600	1200	1600	1621	1642	3,4

Ceiling mounting (standard applications)



For wall mounting applications in vertical and/or horizontal positions its required to use special set of screws and nuts (WT470Z SCREW-VP SET supplied as accessories).



The light source contained in this luminaire shall only be replaced by the manufacturer or his service or a similar qualified person. Driver insulation: Basic according to IEC 61347-1.

